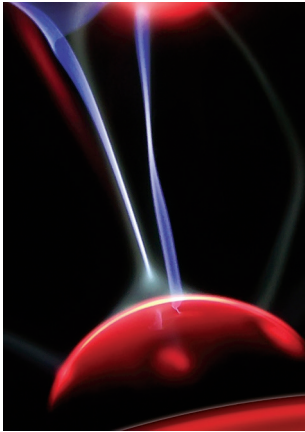


Nemo2.0

NEMO2.0 65 • 80 • 120 • 160 • 200 • 300 • 400
Line Interactive Single-phase Uninterruptible Power Supply

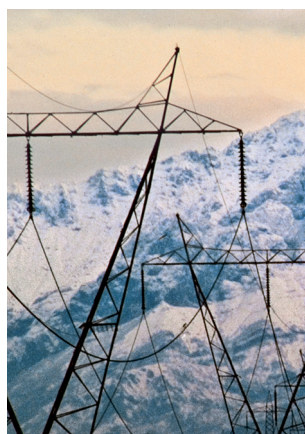
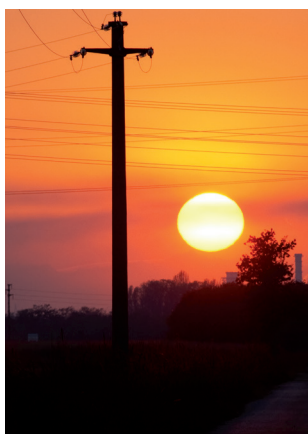


Uninterruptible Power Supplies

TECHNICAL DATA

Code	65	80	120	160	200	300	400
Input							
Input Voltage (Vac)	220-230-240						
Input Voltage Range (Vac)	162-290						
Frequency (Hz)	50/60 (automatic selection)						
Output							
Output Voltage (Vac)	230						
Output Voltage Range	± 10%						
Frequency (Hz)	50/60 (as input frequency)						
Power (VA)	650	800	1200	1600	2000	3000	4000
Active Power (W)	330	400	600	800	1000	1500	2000
Switching time	2-6 ms typ.						
Outlet IEC type	2	2	4	2	2	2	2
Outlet Shuko type	-	-	-	2	2	2	2
Noise Filtering							
Modem/T port (10BaseT/100baseT)	RJ11/RJ45 (compatible network)						
Battery							
Typ. Autonomy	10 min						
Battery Capacity (Ah)	1x4,5	1x7	1x9	2x7	2x9	2x9	4x9
Type of battery	maintenace-free, sealed lead-acid						
Recharging time	6-8 hr at 90% following a deep discharge						
Protection							
Overvoltage/Undervoltage	switching to "Battery Operation"						
Overload/Short Circuit	Fuse and Electronic threshold yes. Both on Mains Operation and on Battery Operation						
Mechanical features							
Maximum Dimensions (LxPxH) mm	101x298x142		149x353x162		158x380x198		145x436x213
Weight (Kg)	3,9	4,4	4,7	8,4	10	10,5	23
Environmental Conditions							
Environmental	Temperature 0-40°C, Humidity 0-90% without condensing, Altitude max 3000 mt. <40dbA (at1mt.) both on "Mains Operation" and on "Battery Operation"						
Acoustic Noise							





NaiconGroup

Naicon srl Via il Caravaggio, 25 Trecella
I-20060 Pozzuolo Martesana - Milano (Italy)
Tel. +39 02 95.003.1 Fax +39 02 95.003.313
www.naicon.com e-mail: naicon@naicon.com